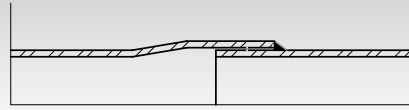
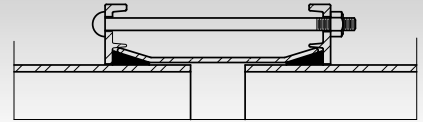


## COMMON PIPE JOINTS

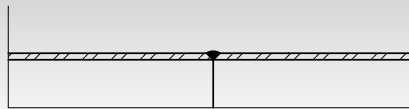
**WELDED LAP JOINT  
(Bell & Spigot)**



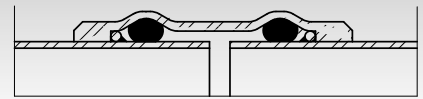
**MECHANICAL JOINT  
(Sleeve-Type Coupling)**



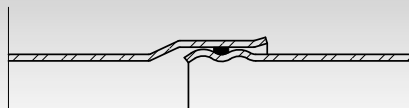
**BUTT-WELD JOINT**



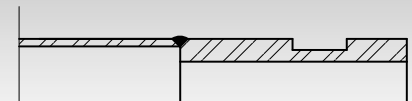
**MECHANICAL JOINT  
(Depend-O-Lok Coupling)**



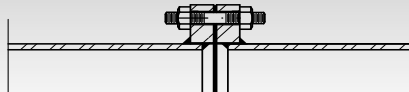
**"O" RING GASKET JOINT  
(Bell & Spigot Rolled Groove)**



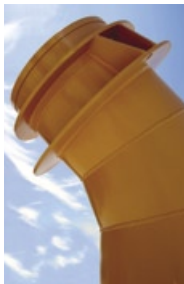
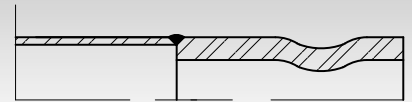
**MECHANICAL JOINT  
(Cut-Groove Victaulic End)**



**FLANGED JOINT**



**MECHANICAL JOINT  
(Rolled-Groove Victaulic End)**



**MECHANICAL JOINT  
(Type-D Shoulder Victaulic End)**

